



www.stromi-nn.ru

DESIGN AND PRODUCTION OF CONTINUOUS WEIGHERS, STEP-BY-STEP ACTION DOSING UNITS AND MOBILE DOSING UNITS



Contents:

Batch measuring equipment.....	2
Multi-purpose proportioning complexes KDU-G.....	3
Small-scale proportioning complexes.....	5
Proportioning complexes for small components.....	7
Proportioning-mixing complex for small components.....	9

Batch measuring equipment

A particular equipment class manufactured by “Stromizmeritel” is: strain-measuring weighing dosing units of step-by-step action with; continuous-running; volumetric proportioners operating on liquid flow measurement principle and differential dosing units.

The specialists of the company successfully settle questions of dosing of liquid and free-flowing materials, caking ingredients of glass mixture as well as poorly flowing and water-absorbing coherent materials and small additives for preparing of premixes.

“Stromizmeritel” manufactures a wide range of the strain-measuring weighing dosing units equipped with the gravity, vibrating, screw and double-screw loading and unloading feeders:

- small-scale dosing units for partial doses (dosing according to load);
- small-scale dosing units for full doses (dosing according to both loading and unloading);
- one-component dosing units for full doses with a weight receiving device based on one or three strain sensors (dosing according to both loading and unloading);
- multi-component dosing units with weight receiving device based on three strain sensors (dosing according to load);
- continuous-running strain-measuring proportioners for glass mixture and cullet (are integrated into the belt conveyors);
- continuous-running weighing dosing devices/flowmeters based on the belt feeders;
- mobile strain-measuring weighing dosing devices – carts, operating in manual, semiautomatic and fully automatic control mode;
- strain-measuring scale platforms;
- weighing hopper devices for measuring of material level and consumption;
- dosing and mixing units for dosing of small components (glass mass dyes and decolorizers) and preparing premixes etc.

A variety of the dosing units manufactured by “Stromizmeritel” expands technological capabilities and allows unifying the design process of the dosing-mixing lines.

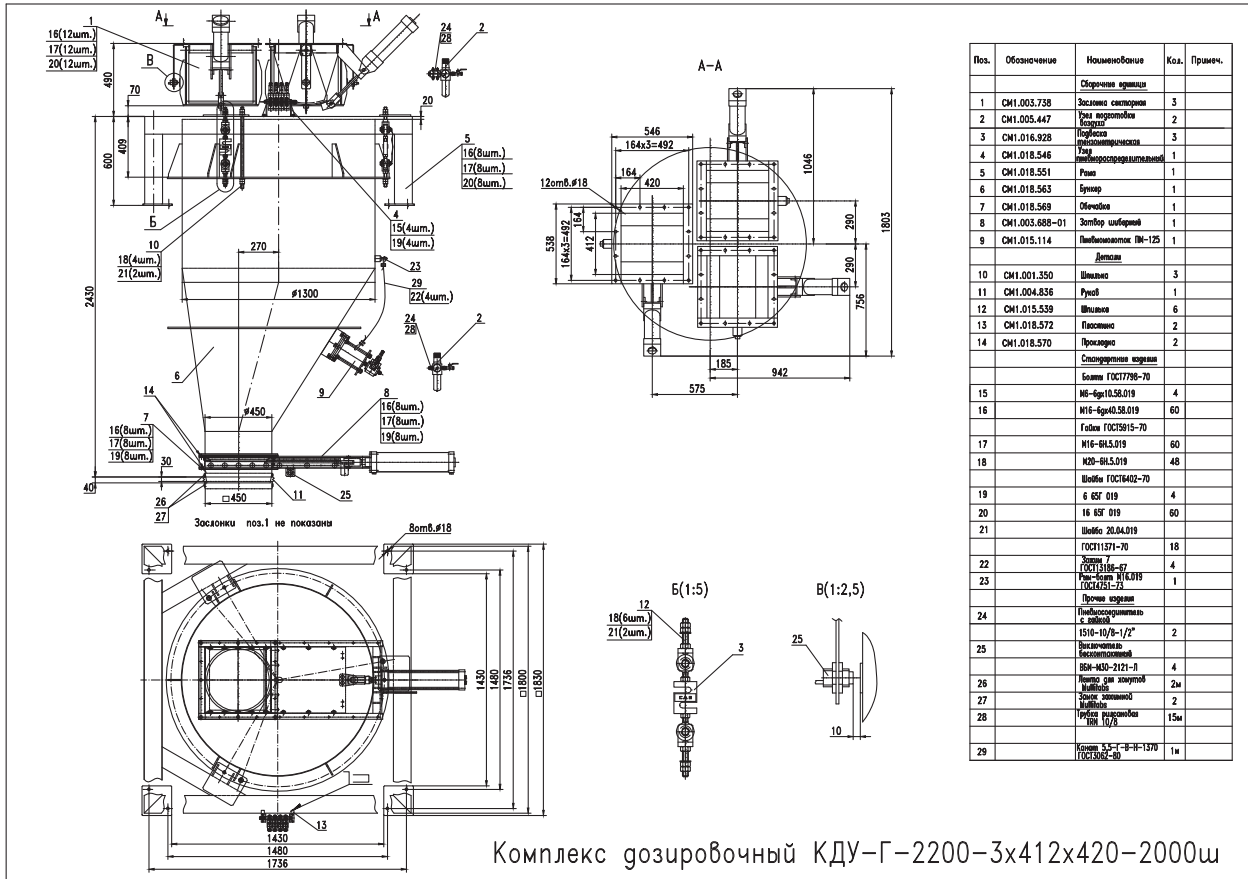
MULTI-PURPOSE PROPORTIONING COMPLEXES KDU-G

APPLICATION

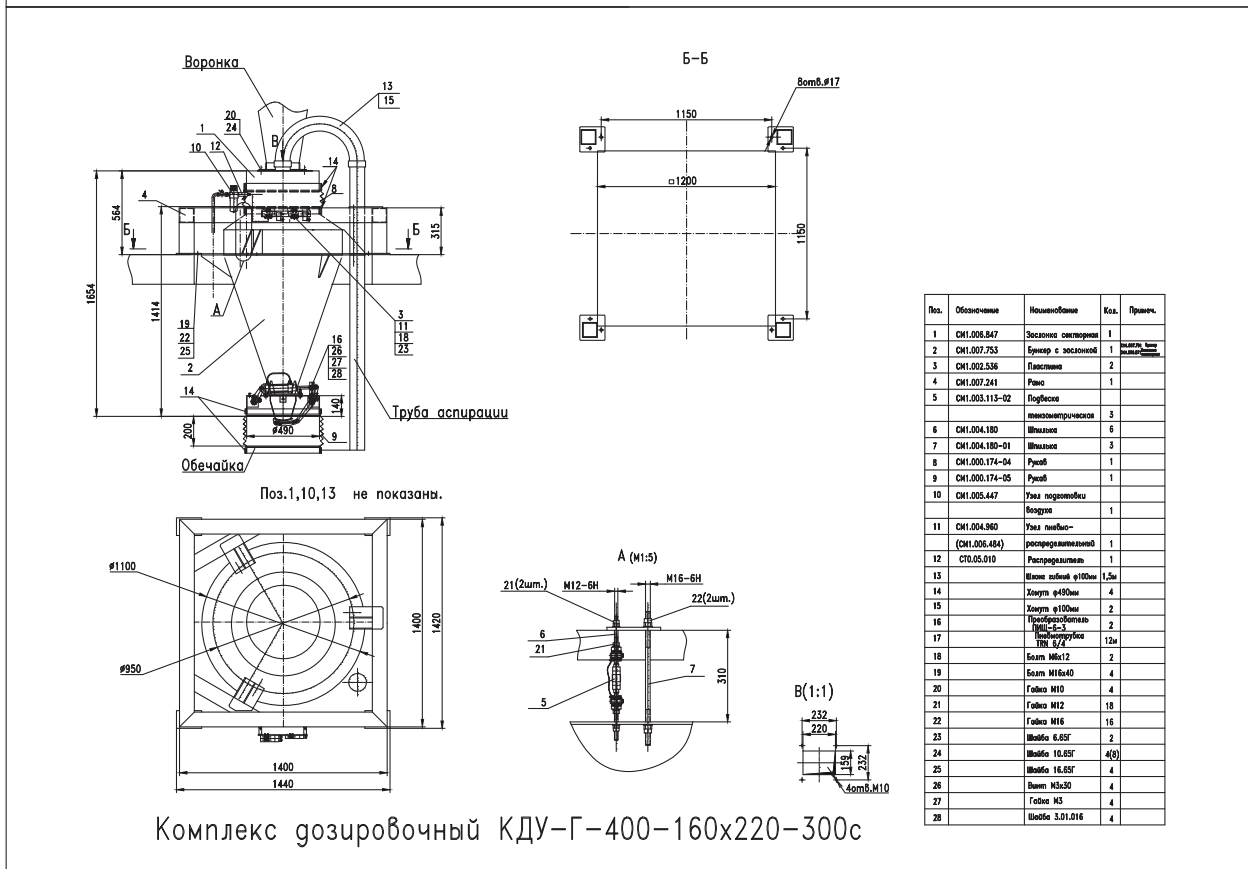
Multi-purpose proportioning complexes KDU-G are used for dosing of free-pouring components (sand, feldspar, columbite slack and others) in different branches of industry. Design of these complexes involves the use of gravity feeders when loading and unloading the materials.

Technical data of the multi-purpose gravity proportioning complexes:

Parameters	2KDU-G-2200-3x412x420-2000sh	2KDU-G-2200-4/2x412x420-2000sh	KDU-G-2200-3x412x420-2000sh	KDU-G-30-100x170-32d	KDU-G-150-160x220-130c	KDU-G-400-160x220-300c	KDU-G-900-160x220-700c	KDU-G-1000-160x220-750c	KDU-G-1600-nx160x220-1200c
The lowest limit of proportioning, kg	1600	1600	1600	20	100	280	600	600	1100
The biggest limit of proportioning, kg	2200	2200	2200	30	150	400	900	1000	1600
Proportioning cycle time, sec., max.	150	150	150	30	30	60	180	180	150
Limit of permissible variations of the dose weight mean value, %	±0,1	±0,1	±0,5	±0,1	±0,1	±0,1	±0,1	±0,1	±0,1
Tank volume, l	2000	2000	2000	32	130	300	700	750	1200
Complex weight, kg	1900	1900	1150	85	155	165	550	550	600
Compressed air consumption, normalized to standard conditions (temperature 20°C and pressure 0,1 MPa), m ³ /min., max.	0,5	0,5	0,5	0,5	0,25	0,25	0,25	0,25	0,25
Consumed power, W	15	15	15	15	15	15	15	15	15
Type of the feeding devices	Sector gates	Sector gates	Sector gates	Gravity	Gravity	Gravity	Gravity	Gravity	Gravity



Комплекс дозировочный КДУ-Г-2200-3x412x420-2000ш



Комплекс дозировочный КДУ-Г-400-160x220-300с

SMALL-SCALE PROPORTIONING COMPLEXES

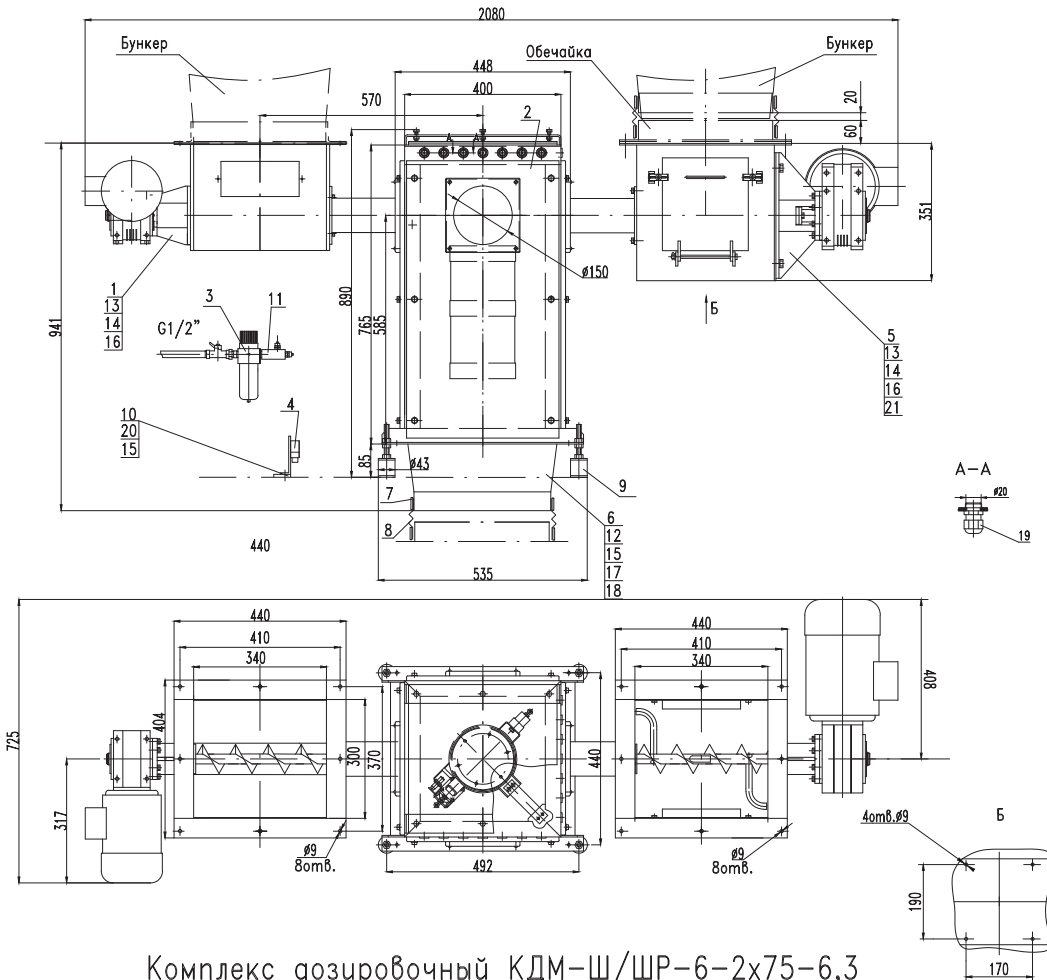
The small-scale proportioning complexes SPC are designed for proportioning of raw materials within the range of up to 6 kg. Design of the SPC is optimized for using materials with "problem" properties: high water-absorbing ability, inclination to overhanging, adhesion and bridging.

General technical data of the small-scale proportioning complexes:

Parameter	Value
The lowest limit of proportioning, kg	4
The biggest limit of proportioning, kg	6
Limit of permissible variations of the dose weight mean value, %	±0,1
Tank volume, l	6,3
Complex control	Electro-pneumatic
Requirements to cleaning and drying of the compressed air as per GOST 17433-80, class	7
IP code of the electrical equipment housing	IP54
Type of the force-measuring sensor	Strain gauge R=20kg
Compressed air consumption, normalized to standard conditions (t=20° C, p=0,1 MPa), m ³ /min., max.	0,06
Diameter of the pneumatic cylinder of the proportioning device, mm	32
Stroke of the pneumatic cylinder piston, mm	80

Product range of the small-scale proportioning complexes SPC:

Name of the complex SPC	Proportioning cycle time, sec., max.	Number of the feeding devices in the complex, n	Overall dimensions of the complex, mm.	Complex weight (with 1 feeder), kg, max.	Consumed power (1 feeder), kW	Feeder type
SH-6-75-6,3	60	1...4	1270x550x850	50	0,75	Screw feeder
SH-6-75z-6,3		1(2)	1270x550x850	50	0,75	
SH-6-2x75-6,3	120	2	2080x725x940	96	0,75/2,2	Screw feeder/ Screw feeder with a ripper
SHR-6-75z-6,3	90	1...4	1270x550x850	80	2,2	Screw feeder with a ripper
SHR-6-75H-6,3		1	2100x640x1300	80	2,2(3)	
SHR-6-nx47-6,3		1...4	1270x550x850	52	0,75	
SHR-6-nx75-6,3		1...4	1270x550x850	80	2,2	
V-6-80-6,3	60	1...4	1075x550x850	50	0,4	Vibrating feeder



Комплекс дозировочный КДМ-Ш/ШР-6-2x75-6,3

Поз.	Обозначение	Наименование	Кол.	Примеч.
1	СМ1.013.918	Питатель винтовой	1	
2	СМ1.003.427	Устройство дозирующее	1	Устройство дозирующее в комплекте с устройством для винтовой подачи
3	СМ1.005.447	Узел подготовки воздуха	1	
4	СМ1.011.524	Узел пневмо-распределительный	1	
5	СМ1.013.847	Питатель винтовой	1	с раздаткой
6	СМ1.005.659	Воронка	1	
7	СМ1.005.524-02	Хомут	2	
8	СМ1.000.174-01	Рукав	1	
9	СМ1.000.666	Опора	4	
10	СМ1.002.536	Пластина	2	
11	СМ1.002.089	Распределитель	1	
12		Болт М6x20	8	
13		Болт М8x35	16	
14		Гайка М8	16	
15		Шайба 6.65Г	10	
16		Шайба 8.65Г	16	
17		Гайка М6	8	
18		Шайба 6.01.016	8	
19		Ввод кабельный РГ 11	7	
20		Болт М6x12	2	
21		Шайба 8.01.016	16	

PROPORTIONING COMPLEXES FOR SMALL COMPONENTS

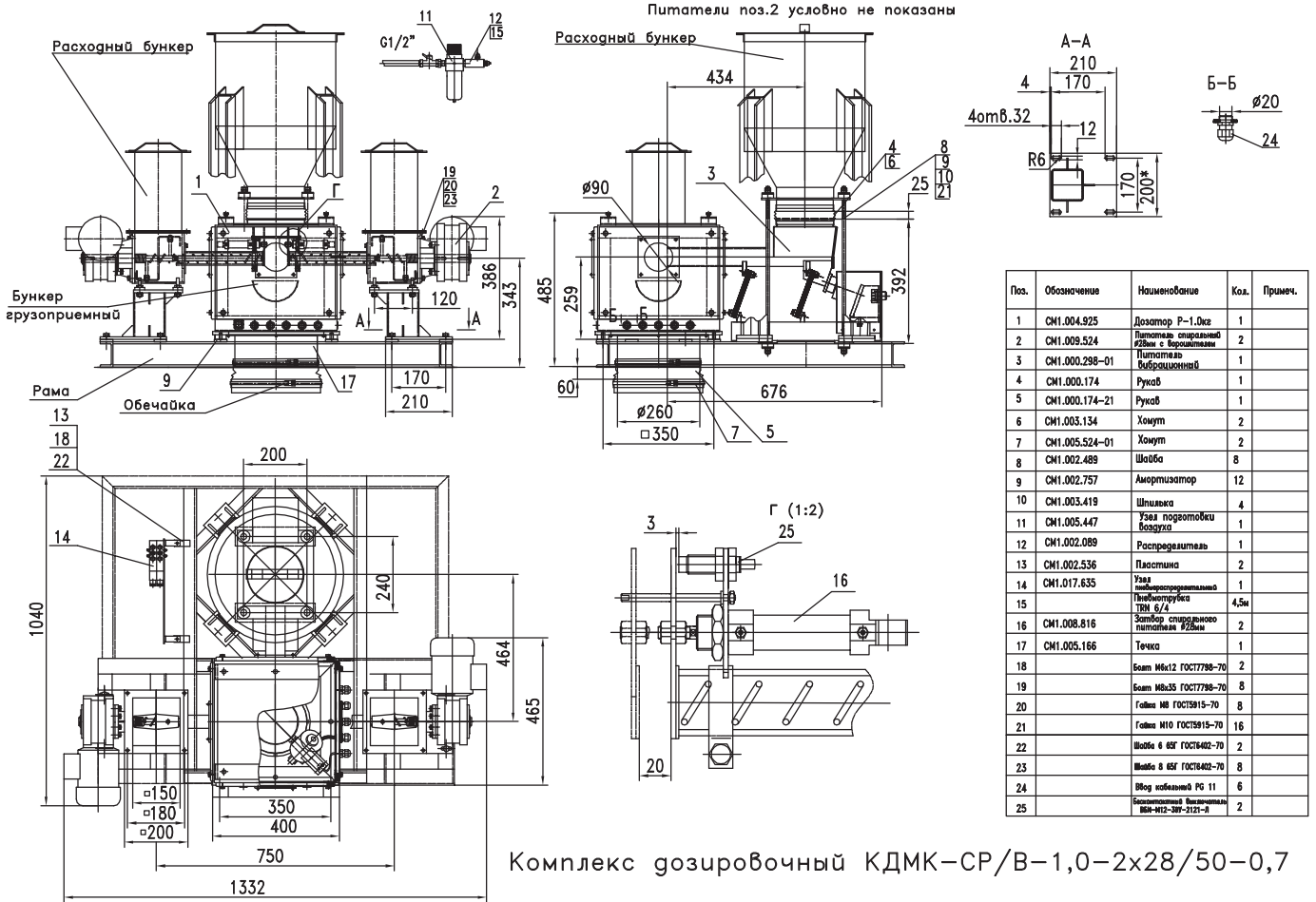
The proportioning complexes for small components (PCSC) are used for proportioning of small components, microadditives, preparation and proportioning of premixes and can be used in different branches of industry. Construction solutions applied in these complexes are optimized for work with "problem" materials, having increased water-absorbing capacity and inclined to overhanging and bridging.

General technical data of the proportioning complexes for small components PCSC:

Parameter	PCSC
The lowest limit of proportioning, kg	0,7
The biggest limit of proportioning, kg	1
Limit of permissible variations of the dose weight mean value, %	±0,1
Tank volume, l	0,7
Requirements to cleaning and drying of the compressed air as per GOST17433-80, class	7
Power supply for the weigher: from DC mains with the following voltage, V	12
IP code of the electric equipment housing	IP54
Type of the force-measuring sensor	Strain gauge R=6kg
Complex control *	Electro-pneumatic*
Air volume consumed per cylinder operation cycle (0,1sec), m ³ *	0,0001*
Consumed power of the distributor, VA *	6,5*
*except for КДМК-B-1,0-nx50-0,7	

Product range of the proportioning complexes for small components:

Name of the complex PCSC	Proportioning cycle time, sec, max.	Type of the feeders	Number of the feeders, n	Complex weight, kg, max. (with 1 feeder)	Compressed air consumption, m ³ /min..	Consumed power of the feeders, kW
SR/B-1,0-2x28/50-0,7	80	Spiral feeder with a ripper / vibrating feeder	2 / 1	155	0,084	2x0,55 / 0,40
C-1,0-nx28-0,7	100	Spiral feeder	1...4	45	0,084	nx0,55
SHR-1,0-47-0,7	80	Screw feeder with a ripper	1	45	0,028	0,75
SR-1,0-nx28-0,7	100	Spiral feeder with a ripper	1...4	35	0,084	nx0,55
B-1,0-nx50-0,7	60	Vibrating feeder	1...5	30	-	nx0,42



STROMIZMERITEL

34-A, Sovnarkomovskaya Str., Nizhny Novgorod, 603086, Russia

Phone/Fax: +7 (831) 435-13-70, 8 (800) 550-59-70. E-mail: stromizmeritel@rambler.ru

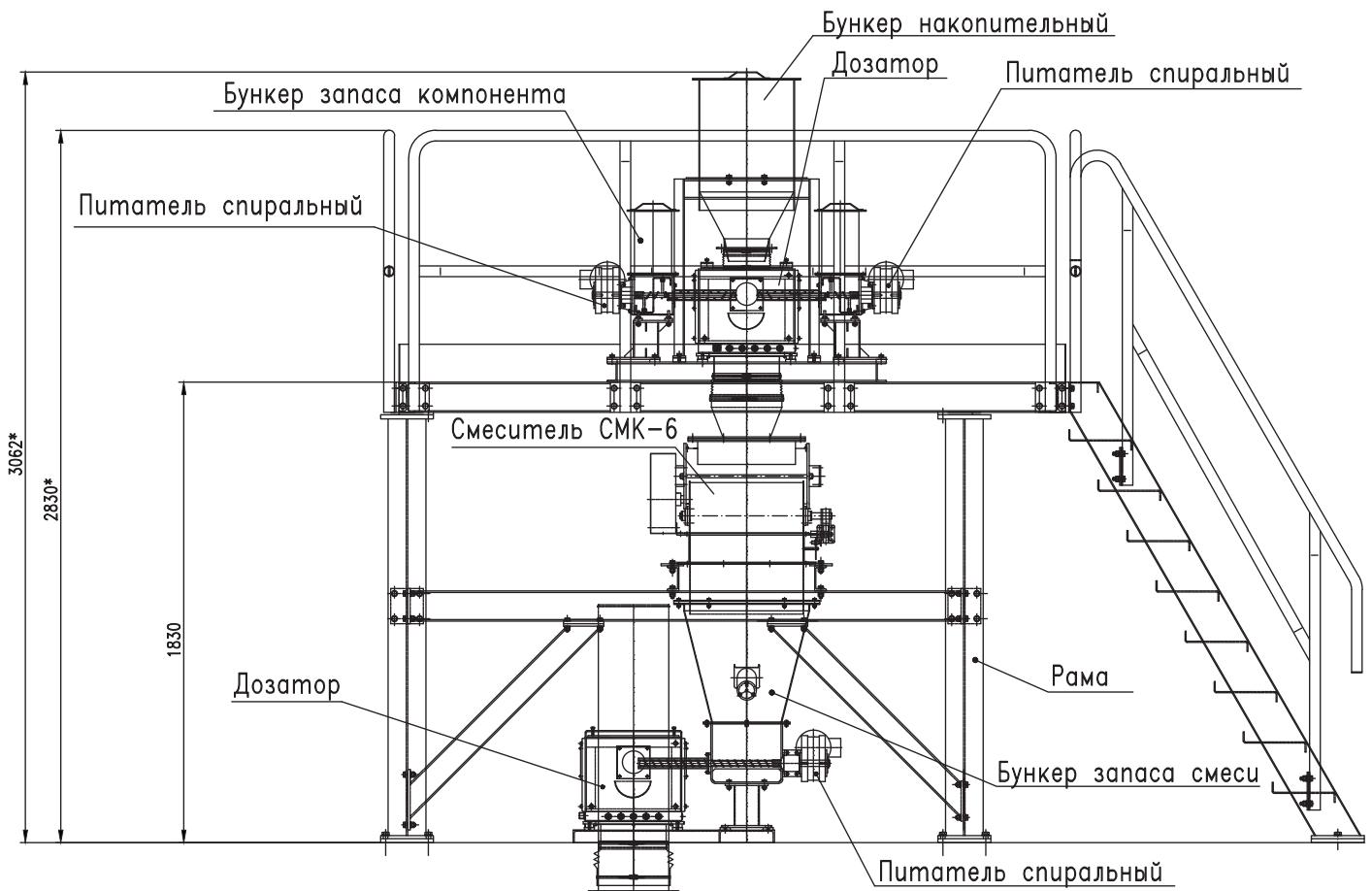
PROPORTIONING-MIXING COMPLEX FOR SMALL COMPONENTS

APPLICATION

The complex is used for preparation and proportioning of free-pouring material mixtures and can be used in different branches of industry. This complex is often used for preparation of premixes – mixture of small additives and small quantity of main raw material. Proportioned materials are free-running components with a natural angle of slope of max.60°, with humidity of max. 1% and grain size of max. 3 mm.

Technical characteristics of the proportioning-mixing complex:

Parameter	PMSC
The lowest limit of proportioning, kg	0,05
The biggest limit of proportioning, kg	1
Proportioning cycle time, sec, max.	90
Average proportioning error, %	±0,1
Volume of the weighing tanks, l	0,7
Type of the feeders	Spiral/vibrating
Number of the feeders, pcs	1..4/ 1
Complex weight, kg, max. (without metal structures)	245
Complex control	Electro-pneumatic
Air supply shall be from air mains with the following pressure, MPa	0,5±0,1
Compressed air consumption, normalized to standard conditions (temperature 20°C and pressure 0,1MPa), m3/min., max.	0,2
Electric power supply: - for spiral feeders from AC network with the following voltage, V - for pneumatic valves for gate control from AC network with voltage, V network frequency, Hz - for weighers: from DC network with voltage, V	380±38 220±22 50±1 12
Consumed power, kW (with one feeder)	0,55
IP code of the electrical equipment housing	IP54
Type of the force-measuring sensors	Strain gauge R=6kg



Комплекс дозирочно-смесительный малых компонентов КДСМК